

Audo

COPENHAGEN



AFTERROOM DINING CHAIR PLUS
Designed by *Afteroom*



AFTERROOM DINING CHAIR PLUS

Designed by *Afteroom*

[BACK TO START](#)

Dining chair with tubular powder coated steel base with extended backrest in veneer. Available with or without upholstered seat.



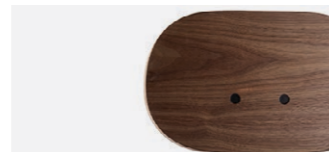
PRODUCT OPTIONS

Seat

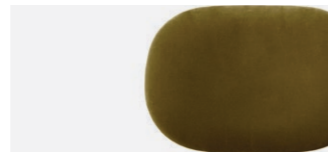


WITH UPHOLSTERY

Backrest options



WALNUT



WITH UPHOLSTERY

Powder coated steel base



BLACK

Spec options

Available in fabrics from our upholstery programme. Standard lead times apply.

For custom upholstery, please refer to the guiding textile/leather consumption:

Seat COM: 0,54 m / 0,594 yds

Seat COL: 0,45 m² / 4,8465 sqft

Seat and backrest COM: 0,59 m / 0,649 yds

Seat and backrest COL: 0,88 m² / 9,4776 sqft

Prices excl. custom upholstery are equal to Price Category 1 Textile or Leather. Contact Sales support for approval of custom upholstery and to place your order.

The above textile consumption is only valid for textile rolls with a width equal to or greater than 140 cm. For smaller textile rolls, please contact Sales Support for guidance. For textile with pattern, please expect a higher usage for correct pattern fitting. Please contact Sales Support for guidance.

TECHNICAL SPECIFICATIONS

PRODUCT TYPE
Dining chair

COLLI
1

ENVIRONMENT
Indoor

DIMENSIONS
H: 80 cm / 31,5"
SH: 46 cm / 18,1"
W: 45,5 cm / 17,9"
D: 51 cm / 20"

PRODUCTION PROCESS
The base is made from bent, welded steel tubes with a powder coated finish. The upholstered seat and back are made of plywood upholstery shell, foam and fabric. The walnut back is made of curved walnut veneer.

COLOUR
Backrest with/without upholstery
Walnut or dependent upon selected upholstery

Seat with upholstery
Dependent upon selected upholstery

Base
Black (RAL 9005)

Gloss
Gloss 10-20

MATERIALS
Powder coated steel, walnut veneer, plywood, CAL117 foam (50N / 50 kg), upholstery.

WEIGHT
4,2 kg / 9,3 lb

TEST
EN1022:2005, L1
EN16139:2013, L1

CERTIFICATIONS
TSCA title VI compliant

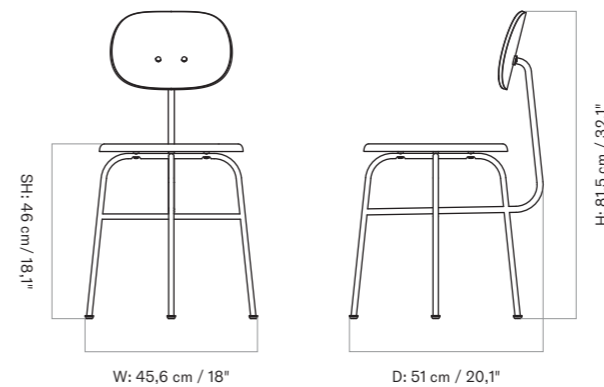
Declare.

PACKAGING TYPE
Brown box

PACKAGING MEASUREMENTS
(H x W x D)
85,5 cm x 45,7 cm x 53,3 cm /
33,7" x 18" x 21"

MATERIALS & MAINTENANCE
Please visit audocph.com for materials, care and maintenance instructions.

AFTERROOM DINING CHAIR PLUS, WALNUT BACKREST



AFTERROOM DINING CHAIR PLUS, UPHOLSTERED BACKREST

